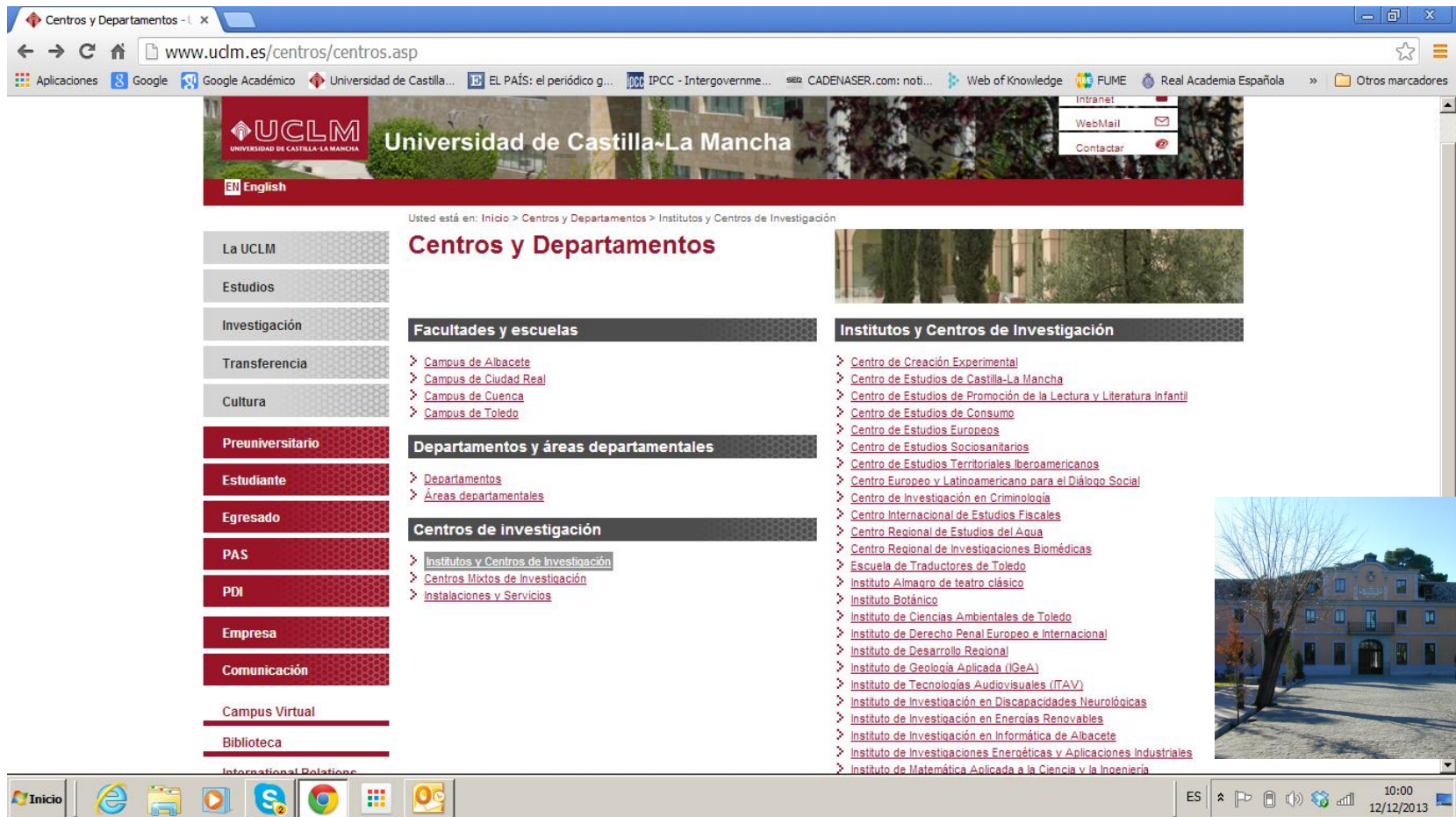


UCLM Fire and Global Change Group

José M. Moreno
(Chair)

E-mail: josem.moreno@uclm.es



The screenshot shows a web browser window displaying the website of the Universidad de Castilla-La Mancha (UCLM). The browser's address bar shows the URL www.udm.es/centros/centros.asp. The website has a red header with the UCLM logo and the text 'Universidad de Castilla-La Mancha'. Below the header, there is a navigation menu with links to 'Intranet', 'WebMail', and 'Contactar'. The main content area is titled 'Centros y Departamentos' and is divided into three columns. The left column contains a vertical menu with links to 'La UCLM', 'Estudios', 'Investigación', 'Transferencia', 'Cultura', 'Preuniversitario', 'Estudiante', 'Egresado', 'PAS', 'PDI', 'Empresa', 'Comunicación', 'Campus Virtual', and 'Biblioteca'. The middle column is titled 'Centros y Departamentos' and contains three sub-sections: 'Facultades y escuelas' (with links to 'Campus de Albacete', 'Campus de Ciudad Real', 'Campus de Cuenca', and 'Campus de Toledo'), 'Departamentos y áreas departamentales' (with links to 'Departamentos' and 'Áreas departamentales'), and 'Centros de investigación' (with links to 'Institutos y Centros de Investigación', 'Centros Mixtos de Investigación', and 'Instalaciones y Servicios'). The right column is titled 'Institutos y Centros de Investigación' and contains a long list of links to various research centers, including 'Centro de Creación Experimental', 'Centro de Estudios de Castilla-La Mancha', 'Centro de Estudios de Promoción de la Lectura y Literatura Infantil', 'Centro de Estudios de Consumo', 'Centro de Estudios Europeos', 'Centro de Estudios Sociosanitarios', 'Centro de Estudios Territoriales Iberoamericanos', 'Centro Europeo y Latinoamericano para el Diálogo Social', 'Centro de Investigación en Criminología', 'Centro Internacional de Estudios Fiscales', 'Centro Regional de Estudios del Agua', 'Centro Regional de Investigaciones Biomédicas', 'Escuela de Traductores de Toledo', 'Instituto Almagro de teatro clásico', 'Instituto Botánico', 'Instituto de Ciencias Ambientales de Toledo', 'Instituto de Derecho Penal Europeo e Internacional', 'Instituto de Desarrollo Regional', 'Instituto de Geología Aplicada (IGeA)', 'Instituto de Tecnologías Audiovisuales (ITAV)', 'Instituto de Investigación en Discapacidades Neurológicas', 'Instituto de Investigación en Energías Renovables', 'Instituto de Investigación en Informática de Albacete', 'Instituto de Investigaciones Energéticas y Aplicaciones Industriales', and 'Instituto de Matemática Aplicada a la Ciencia y la Ingeniería'. The bottom of the browser window shows a taskbar with various application icons and a system clock indicating 10:00 on 12/12/2013.



FORESTERRA

Enhancing FOREst RESearch in the MediTERRanean
through improved coordination and integration



Dr. José.M. Moreno



Fire & Global Change
Fuego & Cambio Global



Dr. Beatriz Pérez



Dr. Belén Luna



Dr. Itziar R. Urbieto



Dr. Belén Hinojosa



Dr. Olga Viedma



Dr. Iván Torres



Dr. Gonzalo Zavala

Permanent or long-term staff



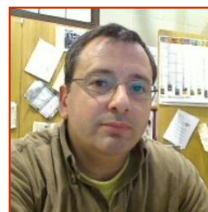
Dr. Juan Quesada



Dr. Marisa Sicilia



Dr. Blanca Céspedes



Ángel Velasco



Daniel Chamorro



Antonio Parra

Temporary personnel

Permanent technician

PhD Students

ICAM, Toledo: Sección III

Networking Workshop. Marseille, France, 12-13 December 2013

Priority research areas and objectives

Interactions of major drivers on fire

- Land-use land cover change
- Climate change

Responses to fire in relation to changes in drivers

- At plant level (plant physiology, demography, community)
- At ecosystem level (soil processes, ecosystem physiology)
- At landscape level (changes in landscape patterns)

Main past and current projects

FUME: Forest fires under climate and socioeconomic change...

- Topic: climate change, and socioeconomic change and fires
- Partners: 33 from 17 countries, 6 continents
- 7 Framework programme)



SECCIA: Shrubland responses to simulated drought and fire...

- Topic: climate change and plant responses to climate change
- Partners: UCLM; Interaction with NITROEUROPE
- National

- **FUELMAP (JRC: Mapping fuels in Europe)**
- **ALARM (6th FWP: Biodiversity and climate change)**
- **REGRESA (Regional: Management, fire severity and vegetation)**

Future perspectives in the forest research domain

Fires in a context of climate change

- Modelling fire occurrence and extent
- **Assessing plant and ecosystem responses to changing climate**

Ecosystem responses to fire and the legacies of the past

- Plant and ecosystem responses in relation to past land-use history or fire history including fire severity patterns

Fires as agents in the landscape

- Reconstructing spatially explicit past fire history
- Assessing impacts of fires in the landscape



Networking Workshop. Marseille, France, 12-13 December 2013

Future perspectives in the forest research domain

Fires in a context of climate change

- Modelling fire occurrence and extent
- Assessing plant and ecosystem responses to changing climate

Ecosystem responses to fire and the legacies of the past

- **Plant and ecosystem responses in relation to past land-use history or fire history including fire severity patterns**

Fires as agents in the landscape

- Reconstructing spatially explicit past fire history
- Assessing impacts of fires in the landscape

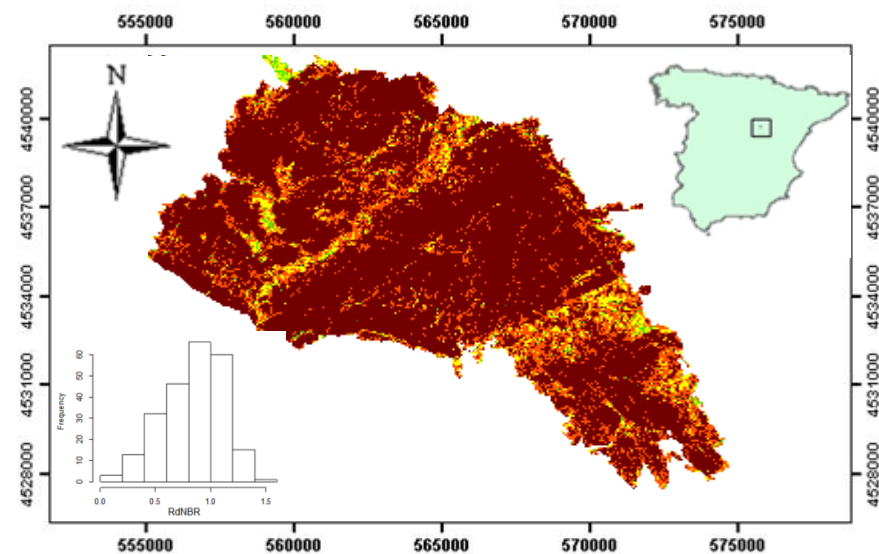


PREFIRE
(1st July 2004)



POSTFIRE
(5th August 2005)

Fire severity (RdNBR) map

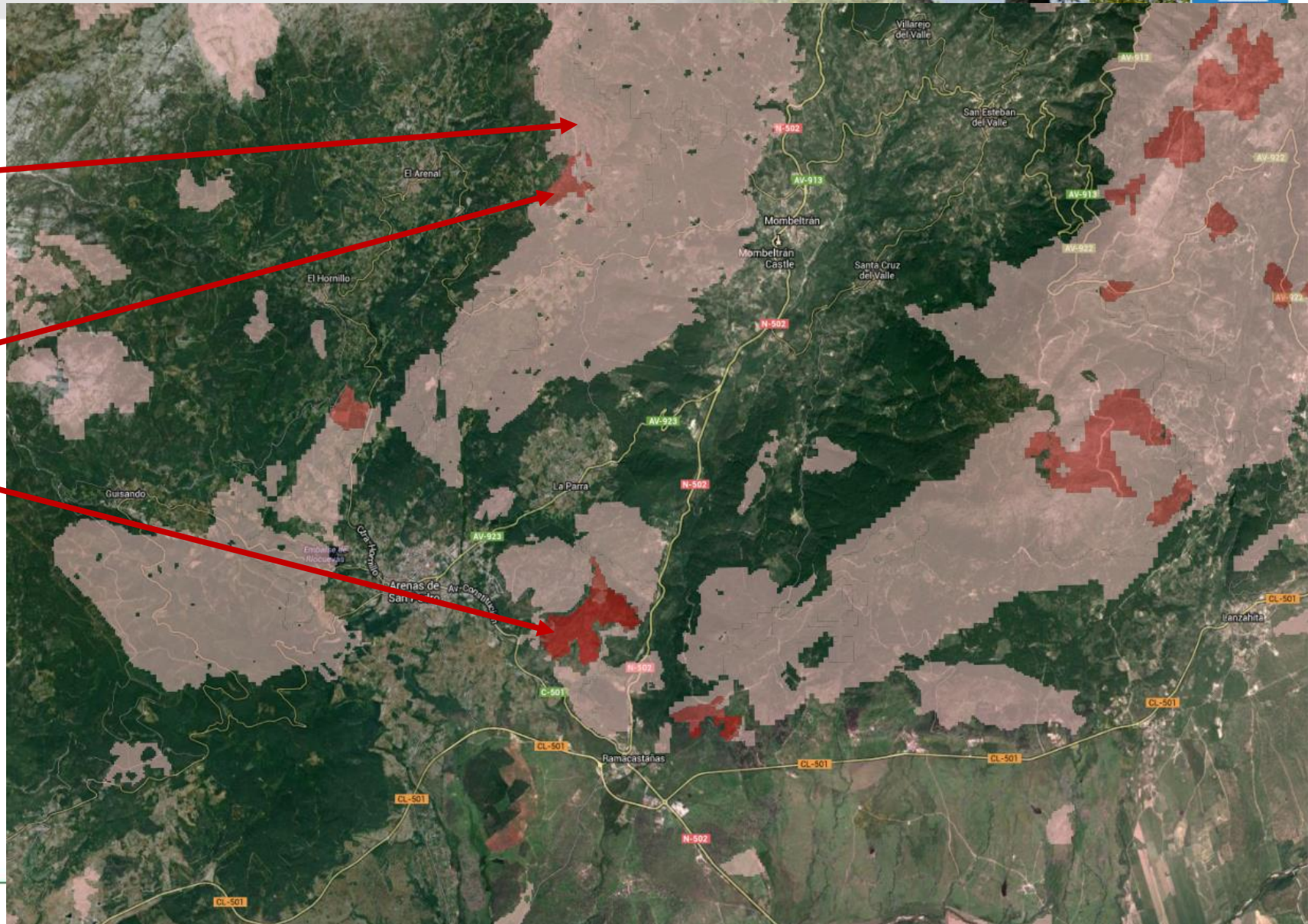


Examples of burning and reburning

Rec 1

Rec 2

Rec 3



Future perspectives in the forest research domain

Fires in a context of climate change

- Modelling fire occurrence and extent
- Assessing plant and ecosystem responses to changing climate

Ecosystem responses to fire and the legacies of the past

- Plant and ecosystem responses in relation to past land-use history or fire history including fire severity patterns

Fires as agents in the landscape

- **Reconstructing spatially explicit past fire history**
- **Assessing impacts of fires in the landscape**



Segesta, Sicily, IT

About forest research infrastructures

List of available infrastructures

- Experimental sites: Quintos de Mora; Sierra de Gredos
- Large facilities: fire laboratory (wind tunnel, burning tables)
- Scientific equipment: Complete ecophysiology instrumentation

Does your institute have a specific policy of access to these infrastructures by other national/international institutes?

- Allowed for collaborating purposes

Do you have any experience in mutual opening and transnational access of infrastructures?

- Yes, collaboration with EU funded project in the framework of national project

Transnational collaborations (European and international)

Does your institute participate in any network? Which one? Which is the main topic?

- **COST Action: ClimMani [Climate Change Manipulation Experiments in Terrestrial Ecosystems: Networking and Outreach]**

Who are the national / European / international institutes with which you have active collaborations?

- **Numerous (in Europe, USA, Australia, Chile, Africa, Turkey)**

Which are the direct outputs from this collaboration?

- **Research oriented**

Transnational collaboration

Which is your interest in creating Transnational Joint Research Units?

- Undertake investigation that exceeds national boundaries
- **A proposal: Sensitivity of forest ecosystems to changes in rainfall patterns (i.e., drought)**

Which are the positive outputs you expect from this type of collaboration?

- Mutual benefit and enhanced capacity, including student exchanges
- Mediterranean coverage across a number of ecosystems

Do you identify any drawback?

- None except limitations due to lack of funding