

INSTITUTE FOR ADRIATIC CROPS AND KARST RECLAMATION

Director: Slavko Perica, PhD

Department for forestry

Lukrecija Butorac, PhD

lukrecija.butorac@krs.hr



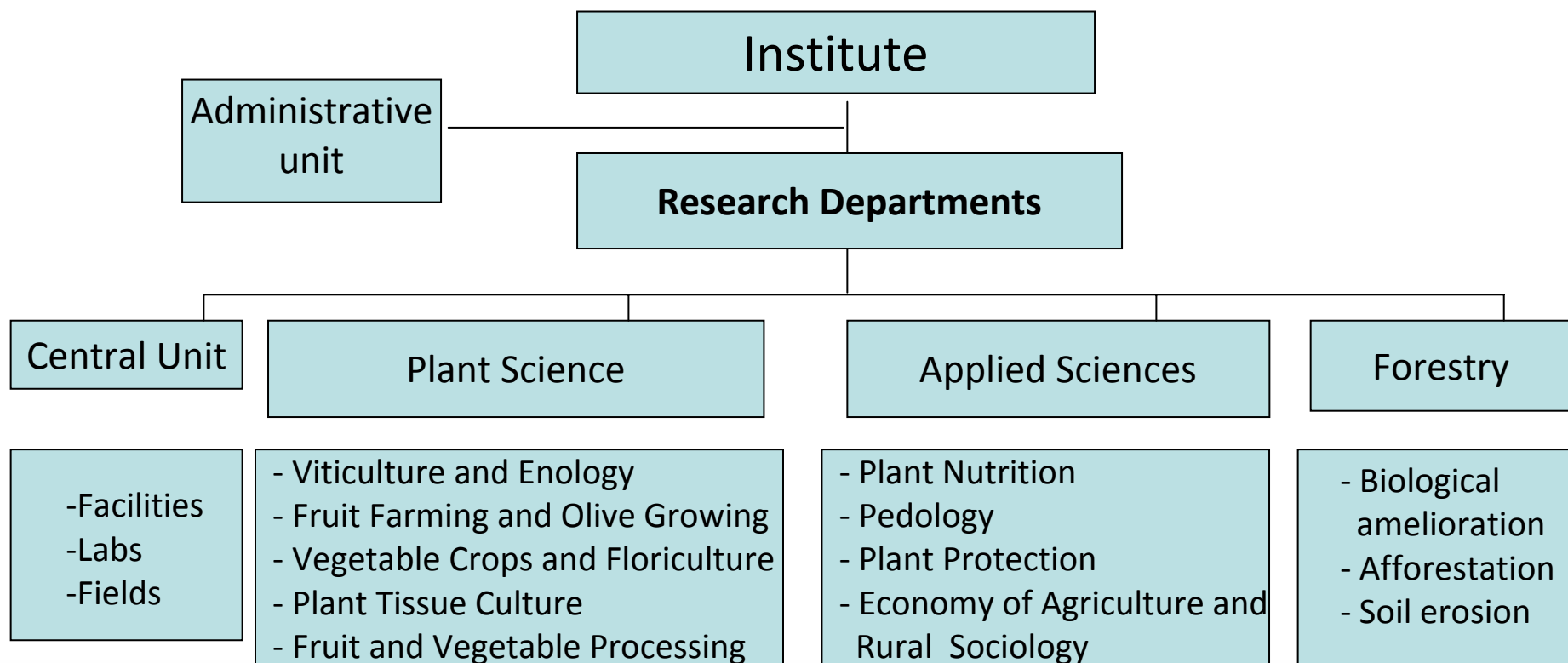


Location of Institute
for Adriatic Crops
and Karst
Reclamation



Institute organization scheme

The Institute today operates as a public research Institute under Ministry of Science and Technology, Republic of Croatia



Priority research area

- Biotechnical scientific research in forestry
- Sustainable management of ecosystems (forest resources) in the Adriatic area

Priorities:

1. Silviculture
2. Soil erosion
3. Fire protection
4. Melioration (Reforestation...)



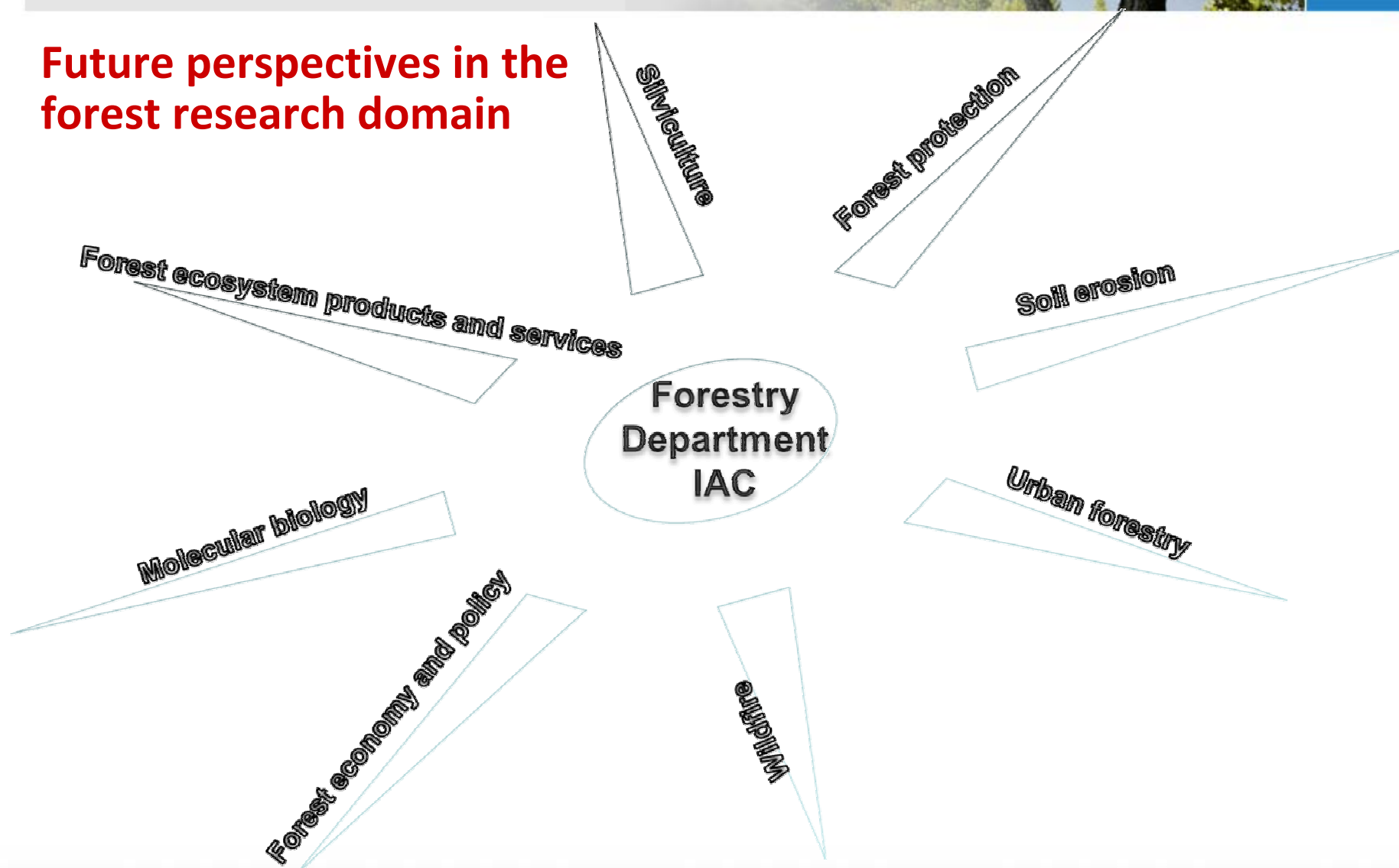
Objectives:

- Affirming IAC position in forestry research on national level
- Cooperation with other (national and international) scientific institutions and stakeholders
- To conduct innovative research projects in the fields of forestry
- Implementation of scientific research, focus on excellence
- Raising awareness on the role of forests
- Transfer of knowledge to users

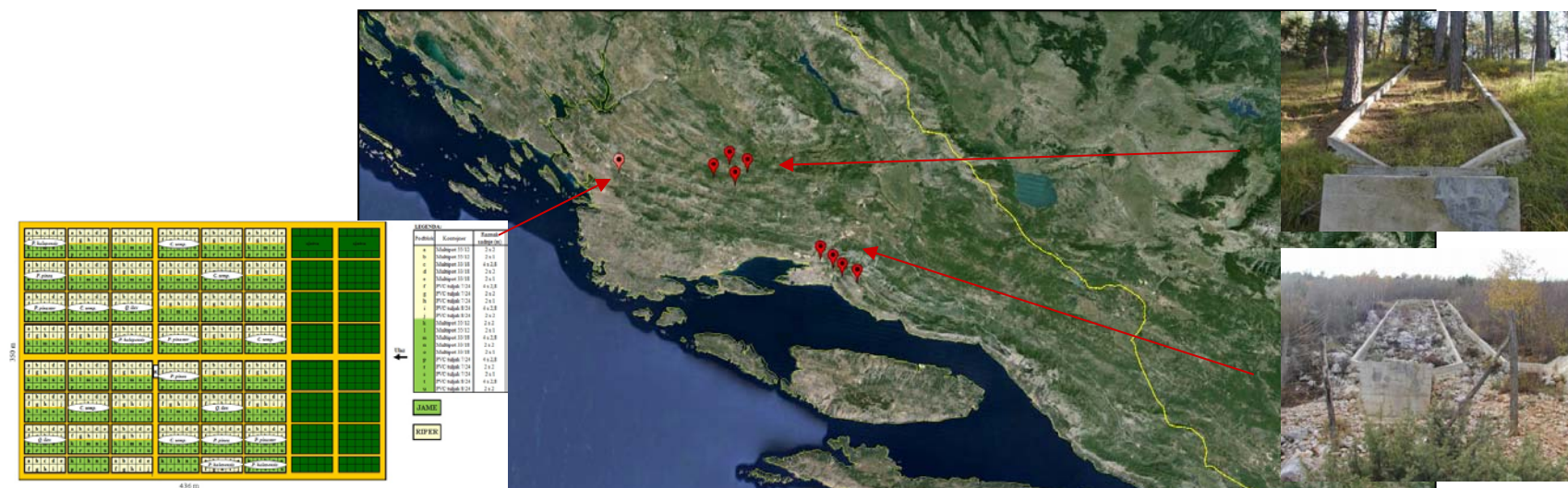
Main past and current projects:

Programme	Project	Partners of this consortium involved
IPA Adriatic	Adriatic Model Forest - New ways of landscape governance	CFRI,IAC
CEPF	Locating the Wild Grapevine Along the River Banks of Krka, Croatia	IAC
Ministry of Science, Education and Sports, Croatia	Choice of the species and methods of afforestation on Mediterranean karst	IAC
Croatian Forests L.t.d.	Role of forest vegetation on soil protection from erosion on Mediterranean area	IAC
COST FP1204	Green Infrastructure approach: linking environmental with social aspects in studying and managing urban forests	Partners from 32 European countries

Future perspectives in the forest research domain



Available infrastructures – Experimental sites



Experimental sites:

- Šibenik, Middle Dalmatia** - Aleppo pine, Cluster pine, Stone pine, Cypress, Holm oak, Black ash, Mediterranean hackberry; different terrain preparation (Ripped and hand excavated pits); afforestation
- Borivača, Rupotine Middle Dalmatia** – Aleppo pine, Black pine, Oriental hornbeam shrub, burned area; soil erosion

Available Infrastructures

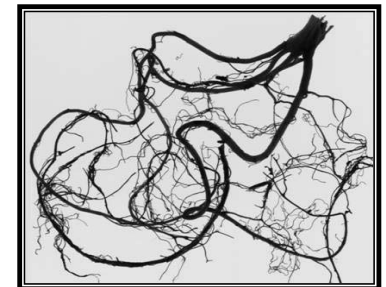
Facilities

1. Laboratory for molecular biology
2. Laboratory of Physical and Chemical analyses of soil samples, plant materials, water and nutrient solution



Facilities

3. Equipment for microscopy and plant histology
4. Equipment for measurements in plant physiology studies
5. Growth rooms and chambers



Specific policy of access to infrastructure

- The equipment of the Institute is available to other science and educational institutions, mainly through joint research projects
- mutual consent/agreement

Experience in mutual opening and transnational access of infrastructures

- Projects
- External users do not use the equipment of the Institute very much.



FORESTERRA

Enhancing Forest REsearch in the MediTERRanean
through improved coordination and integration



Networks participations:

ERA-NET FORESTERRA (01.2012-12.2015)

IUFRO- The World's Network of Forest Science

MEDITERRANEAN MODEL FOREST NETWORK - (8 countries)

Collaboration with institutions

COUNTRY	INSTITUTION	PROJECT/PUBLICATION
Albania	Agricultural University, Faculty of Forestry, Tirana	IPA Adriatic „AMF“
Bosnia and Herzegovina	Faculty of Forestry, Sarajevo,	IPA Adriatic „AMF“
Croatia	Faculty of Forestry, University of Zagreb Croatian Forests Ltd. Ministry of science Croatian Forest Research Institute	Various programmes
Montenegro	Biotechnical Faculty, Univeristy of Montenegro, Podgorica	IPA Adriatic „AMF“
Serbia	Institute of Forestry, Belgrade	IPA Adriatic „AMF“

Transnational Collaboration

Interest in creating Transnational Joint Research Units

1. Collaboration between scientific Institutions on international level
2. Joint Research Projects
3. Increasing work quality
4. Intensive joining the European scientific networks
5. Better planning and implementation of scientific research and achievement of relevant results
6. Increasing of funding resources through competitive and structural funds of the EU

Expected positive outputs

- Raising the level of absorption capacity of the EU average
- Integration into the European Research Area
- Intensive association with the European Scientific Networks
- Assuring intensive specialization and adopting new methods and procedures for all researchers
- Encouragement of mobility

THANK YOU

Lukrecija Butorac, PhD
lukrecija.butorac@krs.hr